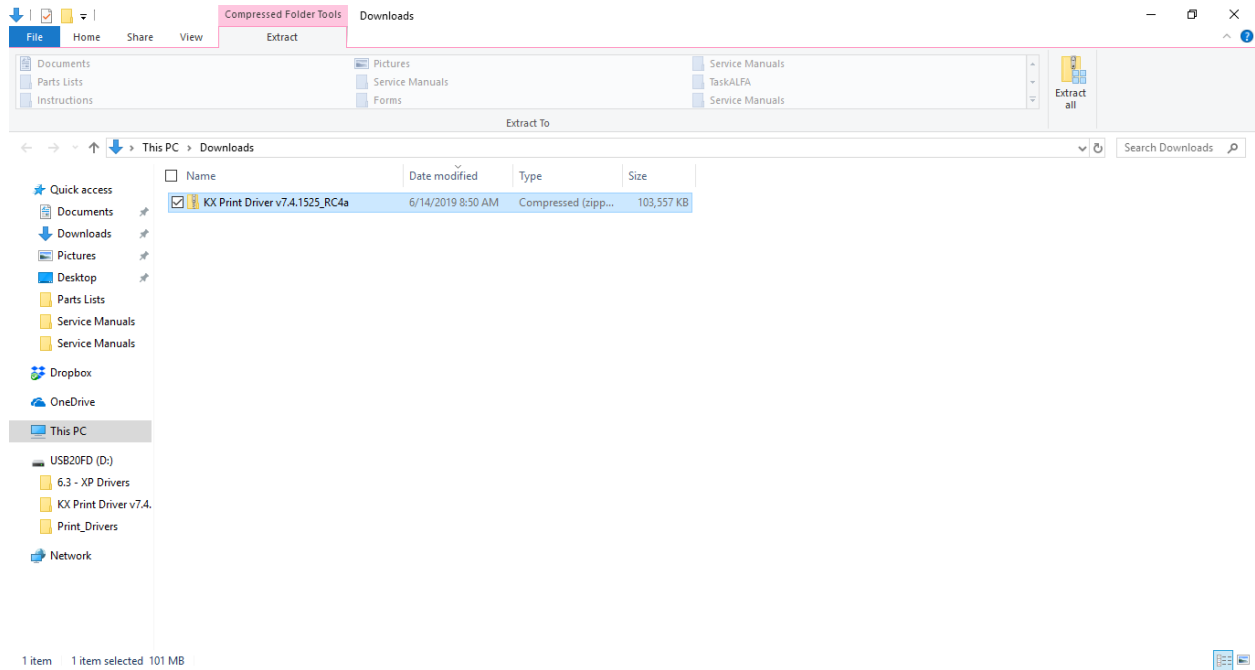


Windows Print Drive Install

Download the print driver from this link: aotsupport.com

Find and extract the file from your download location. (The folder name may be different if the driver package has updated)



Once Extracted open the file.

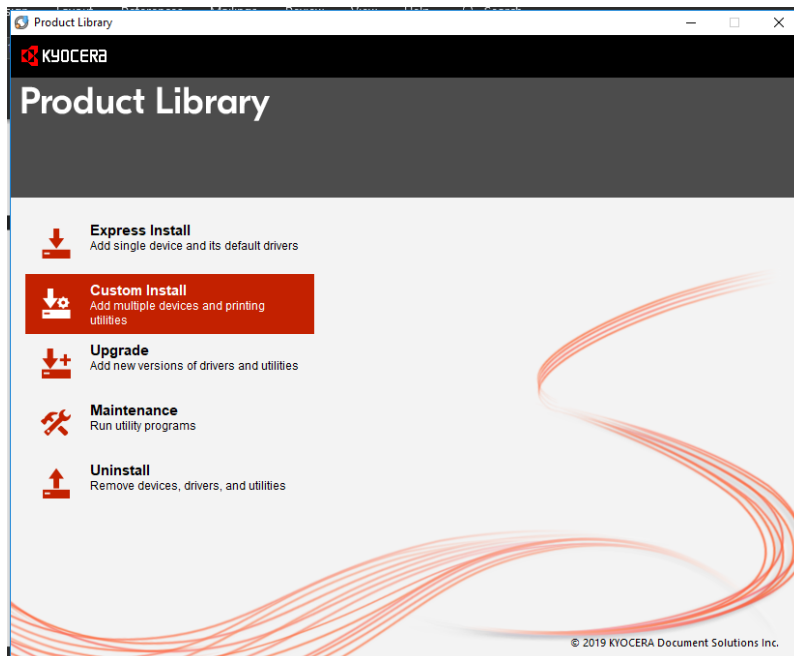
	KX Print Driver v7.4.1525_RC4a	6/14/2019 8:50 AM	Compressed (zipp...	103,557 KB
<input checked="" type="checkbox"/>	KX Print Driver v7.4.1525_RC4a	6/14/2019 8:52 AM	File folder	

Continue into the file until you have a list of files. Scroll down and double click Setup.

	lang4.dat	4/6/2019 2:04 PM	DAI File	131 KB
<input checked="" type="checkbox"/>	Setup	4/6/2019 2:04 PM	Application	119 KB
	setup	4/6/2019 2:04 PM	Configuration sett...	1 KB

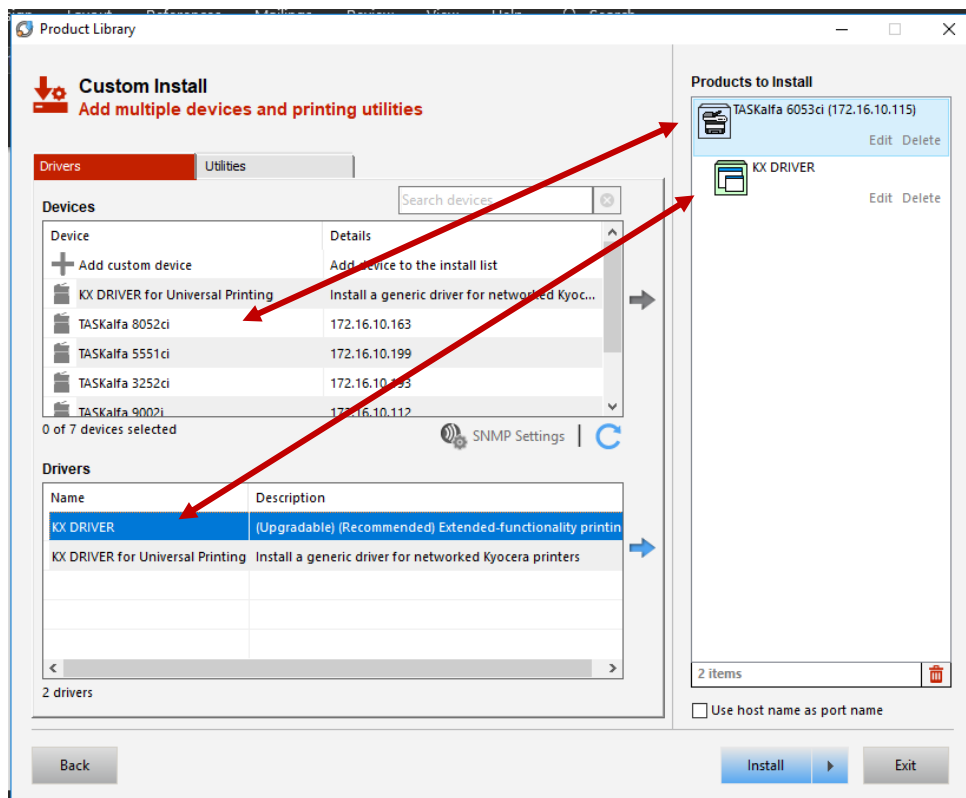
Windows Print Drive Install

Once the installer is open, select Custom install.



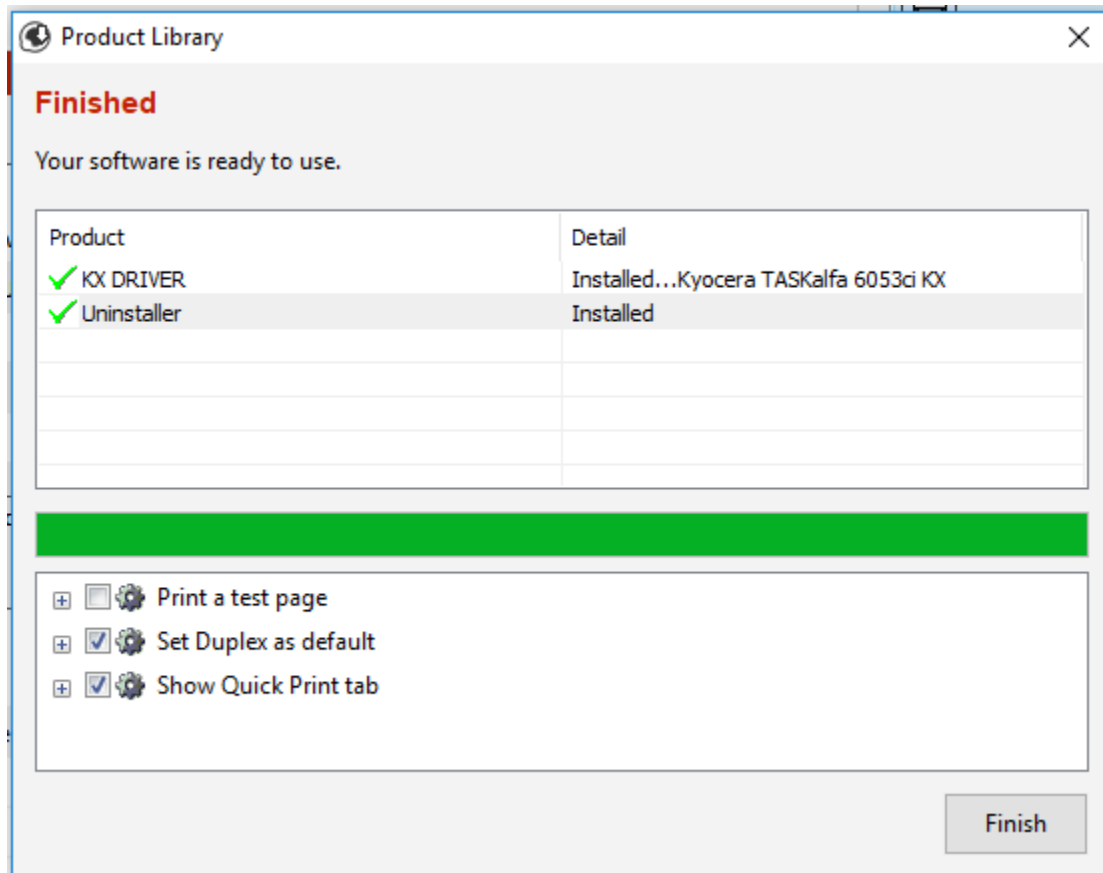
The installer should see the copier on the network, Double click the copier in the upper left pane then double click the driver (**Do Not Use Universal Printing Driver**) in the lower left pane moving them to the right. Then press install.

(Note: Your install window will only show the copier on your network.)

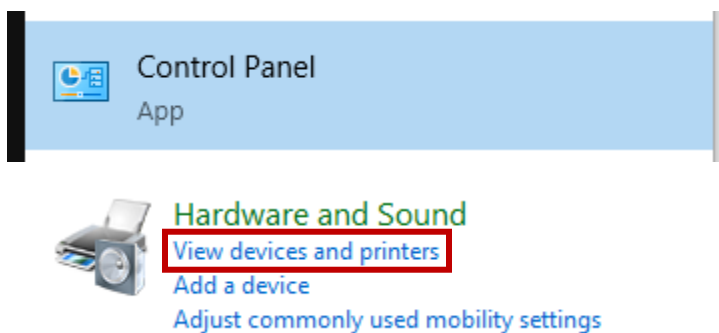


Windows Print Drive Install

You can uncheck the Set duplex as default and show quick print tab. Then select Finish and close the installer.

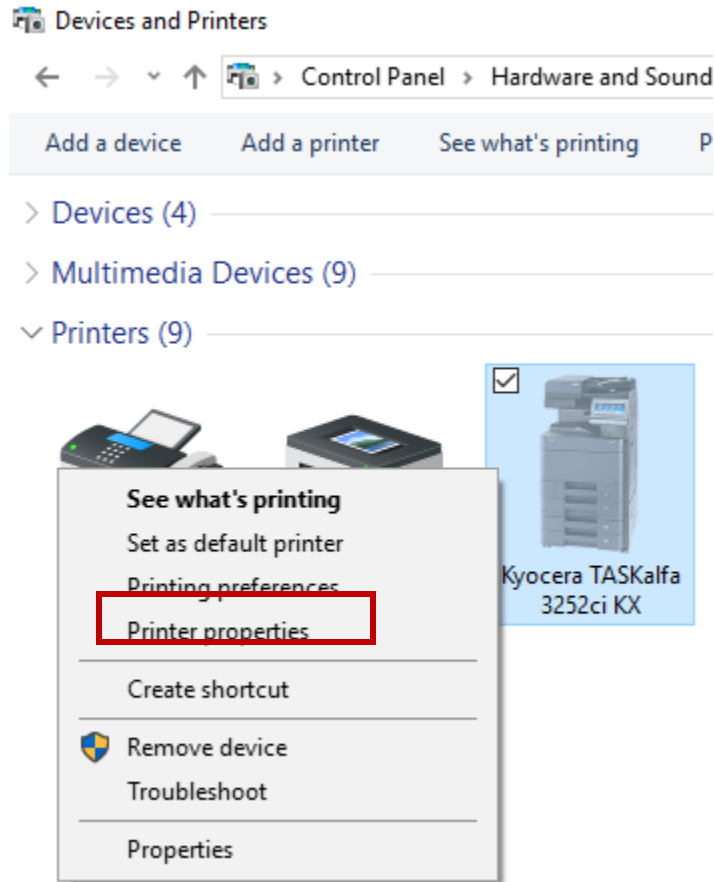


Open Device and printers from the control panel. (View will vary depending on user preferences)

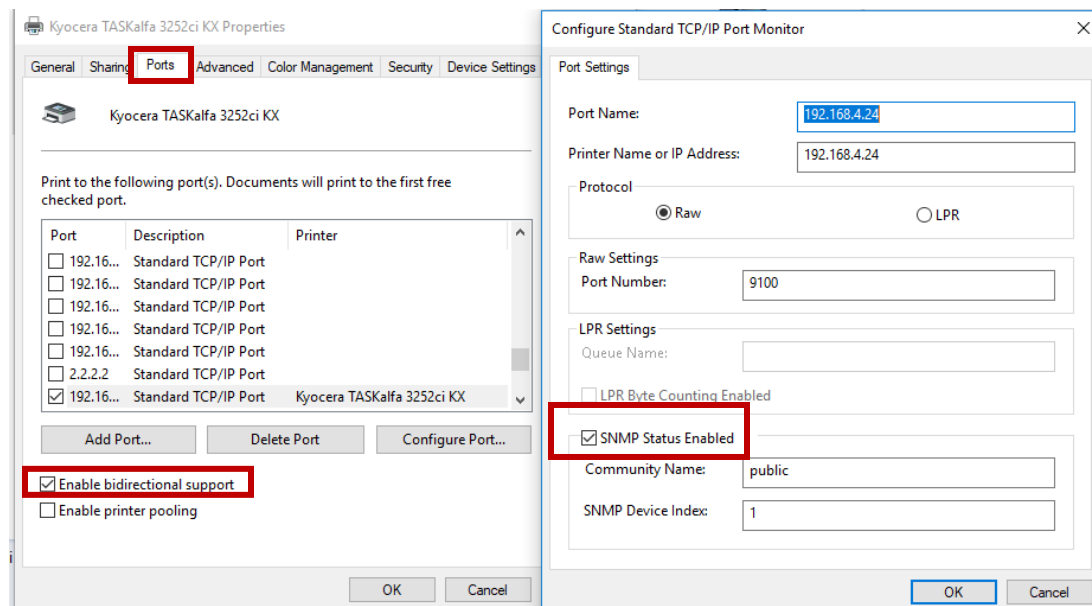


Windows Print Drive Install

Right click on the device and select Printer Properties

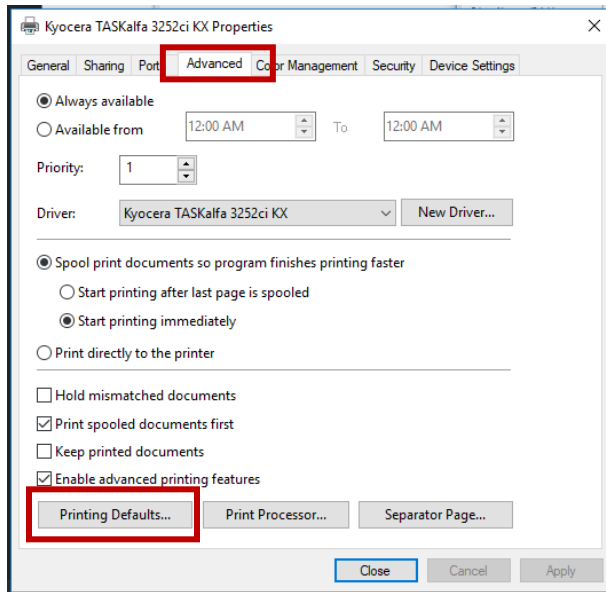


Once opened select Ports Tab, Uncheck Enable bidirectional support, Select Configure Port Button a new window will open, uncheck SNMP Status Enabled if checked. Select OK on the pop up window.



Windows Print Drive Install

Select the Advanced tab and then printing defaults.



Ensure Source and Media types are set to Auto Source Selection and Auto Media Selection. Then Select Black as the color default. Select OK.

